

PI #	Easting	Northing
1	11046.70	- 7419.55
2	11014.89	- 6890.64
3	10352.83	- 6406.85
4	10189.56	- 6890.02
5	9977.73	- 7180.65
6	11442.64	- 6754.49
7	11548.83	- 6265.95
8	11861.45	- 5789.36
9	11388.08	- 5749.92
10	11057.50	- 5524.73
11	10663.90	- 5409.92
12	10621.25	- 5671.46
13	10489.27	- 5907.01
14	10724.83	- 6028.39
15	10352.78	- 6249.59

Line	Bearing	Distance
EA	S58°-21'-44"W	236.01
FH	S25°-46'-02"W	214.87
FJ	S16°-54'-48"W	180.89
FK	S 3°-23'-26"W	229.88
FL	S14°-37'-59"E	209.92

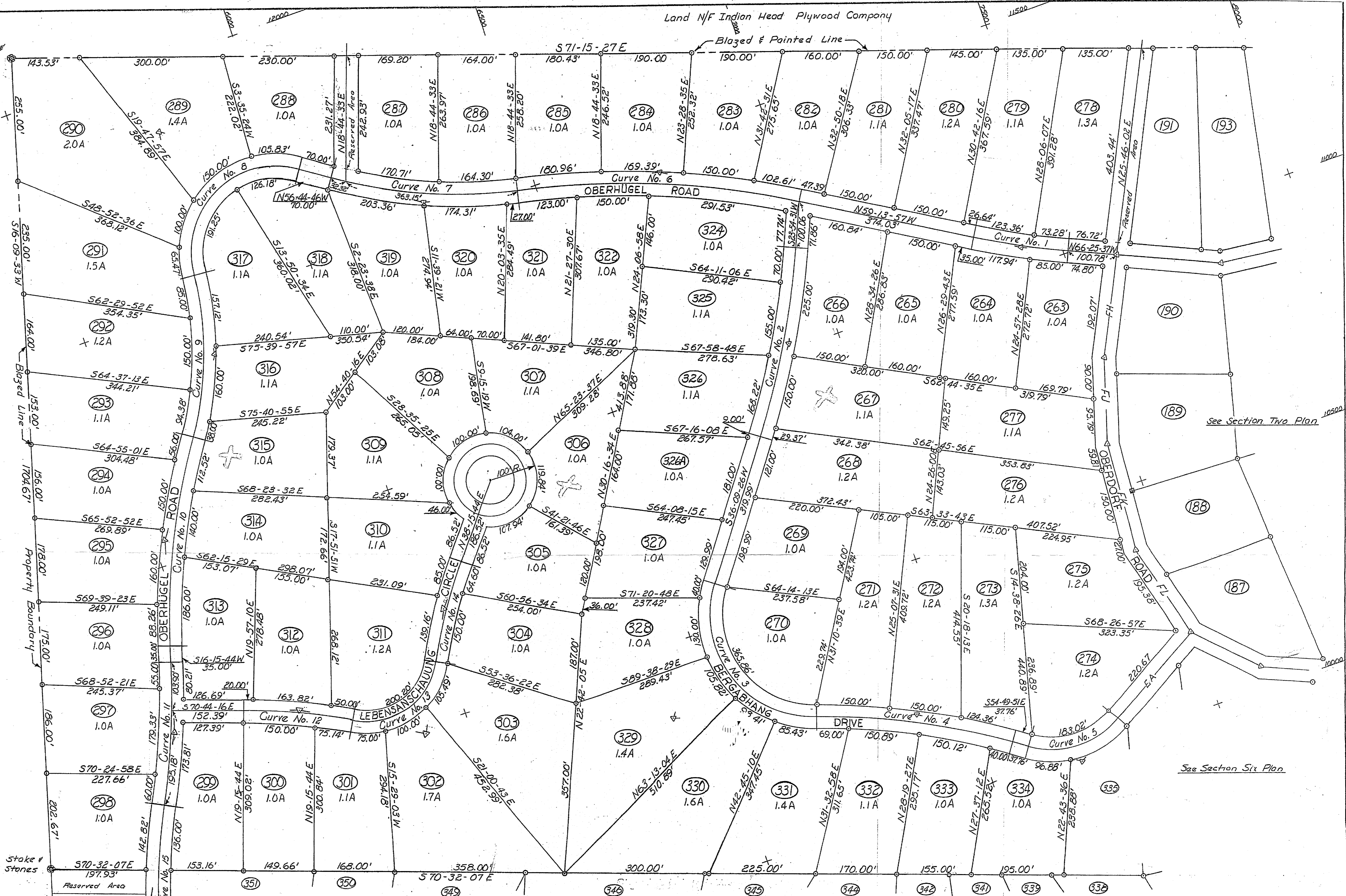
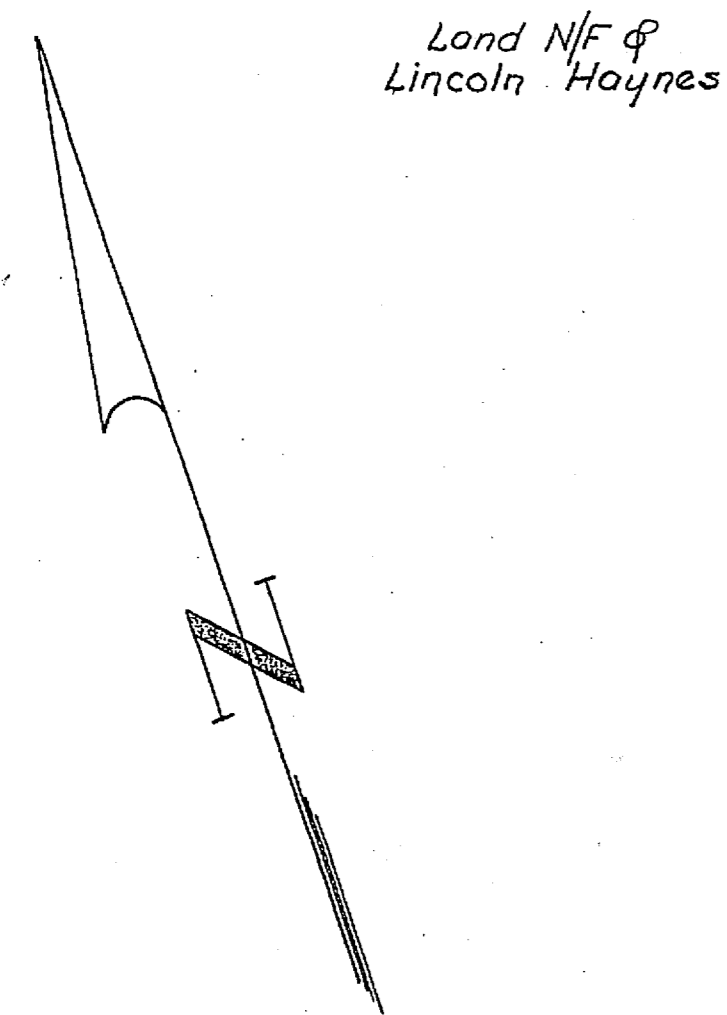
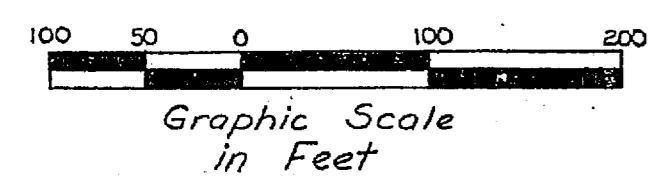
CURVE NO.	Δ	D	R	T	L
1	7°-11'-40"W	3°-36'-11"	1590.71	100.00	199.74
2	12°-14'-55"W	3°-4'-43"	1853.97	200.00	398.48
3	107°-29'-12"W	26°-2'-45"	220.02	300.00	412.76
4	16°-29'-55"W	3°-57'-32"	1448.55	210.01	417.12
5	66°-48'-25"W	31°-29'-23"	181.97	120.00	212.17
6	18°-30'-17"W	3°-6'-69"	1841.42	299.97	594.72
7	20°-59'-58"W	5°-18'-60"	1079.01	199.98	395.47
8	18°-30'-00"W	32°-6'-11"	178.48	300.00	369.14
9	29°-30'-00"W	8°-37'-19"	664.70	175.00	342.23
10	18°-00'-00"W	4°-1'-99"	1420.61	225.00	446.30
11	11°-00'-00"W	3°-40'-68"	1557.83	150.00	299.08
12	10°-00'-00"W	4°-21'-53"	1314.47	115.00	229.42
13	9°-00'-00"W	38°-16'-70"	149.68	155.00	240.34
14	11°-00'-00"W	5°-0'-92"	1142.41	110.00	219.33
15	19°-00'-00"W	4°-47'-64"	1195.16	200.00	396.33

**LEGEND**

- ✱ Points of Tangent Intersection
- Iron Pipe Boundary Marker
- ⊕ Concrete Monument Marker
- + Coordinate System - For plotting only

Explanation of Magnetic Bearings  
 S 30 - 45 - 15 W  
 Degrees Minutes Seconds

- All lots one acre minimum.
- For location of section see sheet 2 of 6 sheets



DATE	REVISIONS
Aug 18-69	Divide lot # 329
Aug 26-69	Reverse lot numbering system
Aug 26-69	Add roadway names

FINAL PLAT — SECTION FOUR  
**ALPENWALD SUBDIVISION**  
 AMERICAN LAND & DEVELOPMENT CORP.

SUBDIVISION LOCATION: STAMFORD · VERMONT  
 LAYOUT BY: DUFRESNE - HENRY ENGINEERING CORPORATION  
 PRECISION PARK, NORTH SPRINGFIELD, VERMONT  
 From Survey & Topography by: Dufresne - Henry Engineering Corp.

D-21160