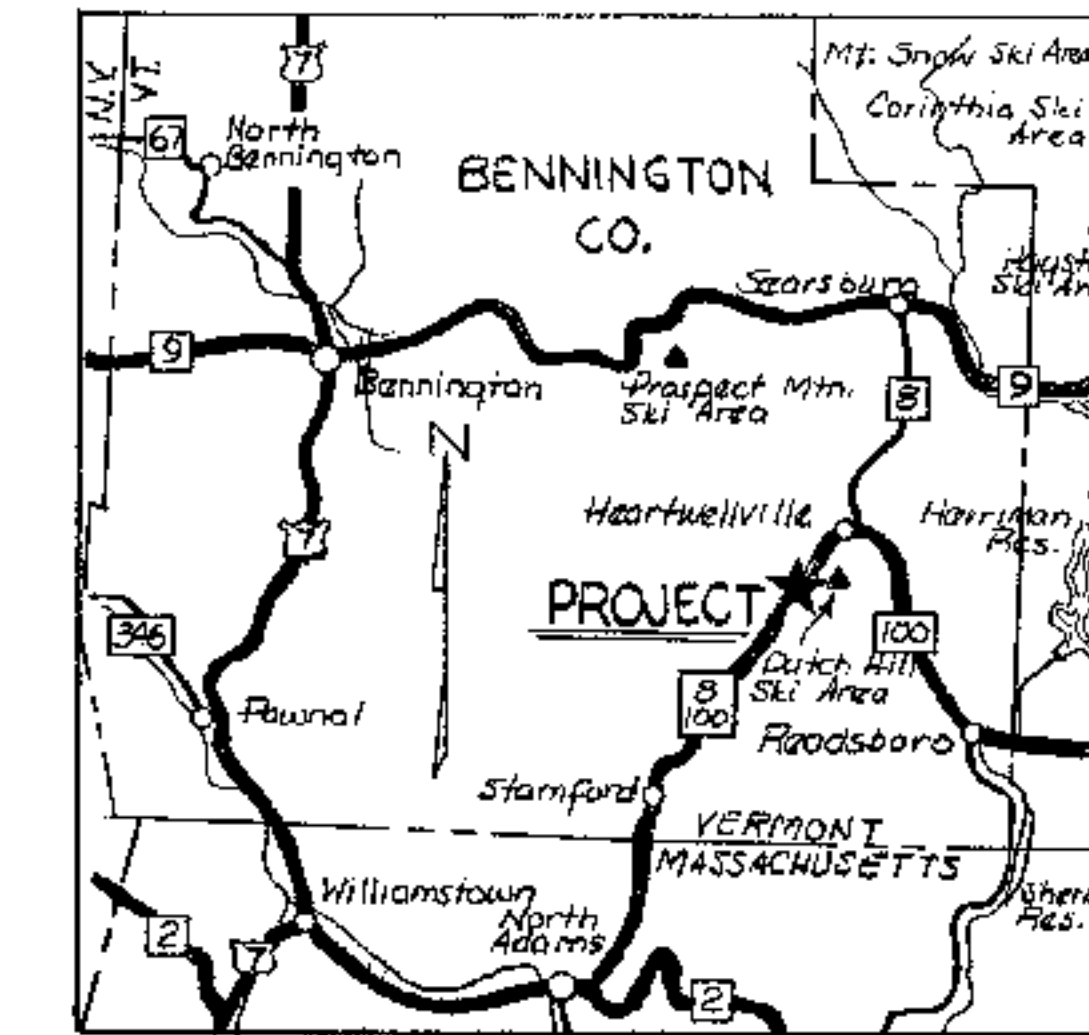
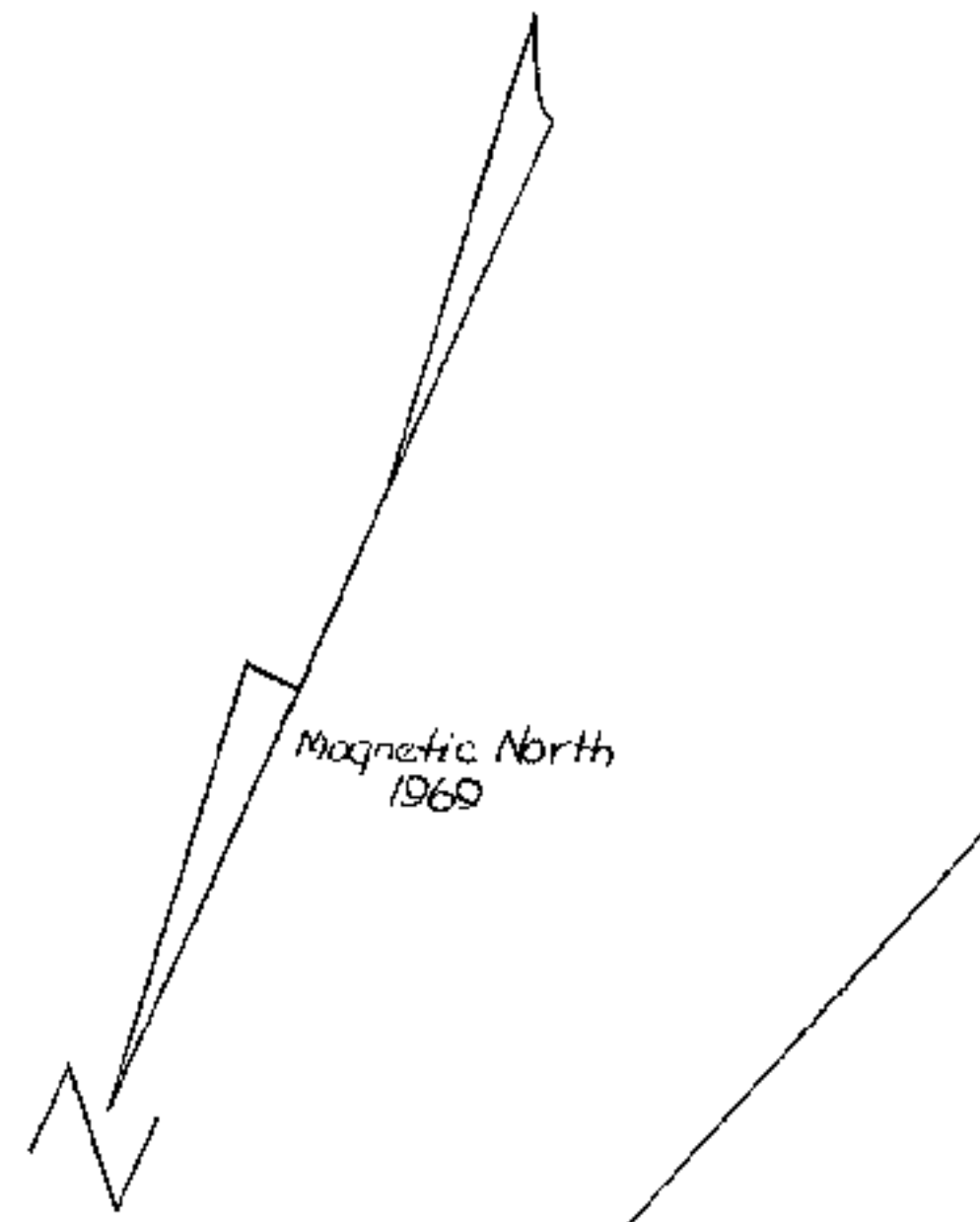


CENTERLINE CURVE DATA					
Curve No.	A	D	R	T	L
1	39°-00' Rt	13°-31.58'	423.59'	150.00'	288.33'
11	40°-30' Rt	10°-34.13'	542.12'	200.00'	383.20'
12	43°-20' Rt	5°-42.88'	1002.61'	400.00'	761.20'

CONTROL COORDINATES	
P. I. #1	9680.6532, 9947.5751
11	0075.9268, 10741.9069
12	0163.1228, 11707.2108

DATE	REVISIONS
9-22-69	Lot Data
5-6-70	Title Block, Scale (Added)



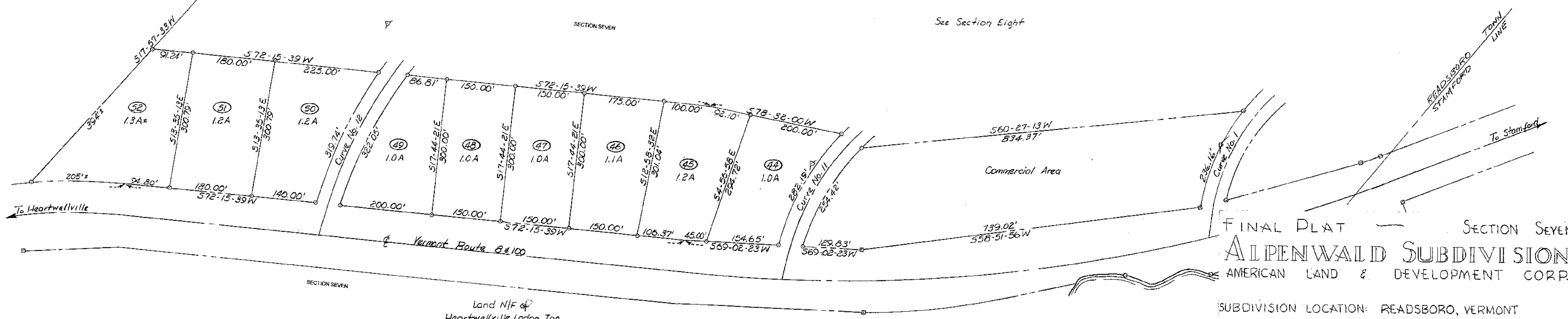
LEGEND

- Property Boundary and Right-of-Way
- o- Iron Pipe
- Concrete Monument
- VSHD Marker
- Lot Boundaries
- ⊗ Point of Tangent Intersection

NOTES

1. All bearings shown on this map are magnetic.
2. All Rights-of-Way are 50 feet in width unless shown otherwise.
3. Property Boundaries are as shown to the engineer by the previous owner.
4. All lots are 1 Acre minimum.
5. This section of Alpenwald property is land formerly owned by Heartwellville Lodge, Inc.

Land N/F of
Dutch Hill Ski Area



Land N/F of
Alpenwald Development

Land N/F of
Heartwellville Lodge, Inc.

**FINAL PLAT SECTION SEVEN
ALPENWALD SUBDIVISION
AMERICAN LAND & DEVELOPMENT CORP.**

SUBDIVISION LOCATION: READSBORO, VERMONT
LAYOUT BY: DUFRESNE-HENRY ENGINEERING CORPORATION
PRECISION PARK, NORTH SPRINGFIELD, VERMONT
From Survey & Topography By: Dufresne-Henry Engineering Corporation
August 1969

Sheet 7 of 7 Sheets

